

NAME: Canton Apartments 80004456

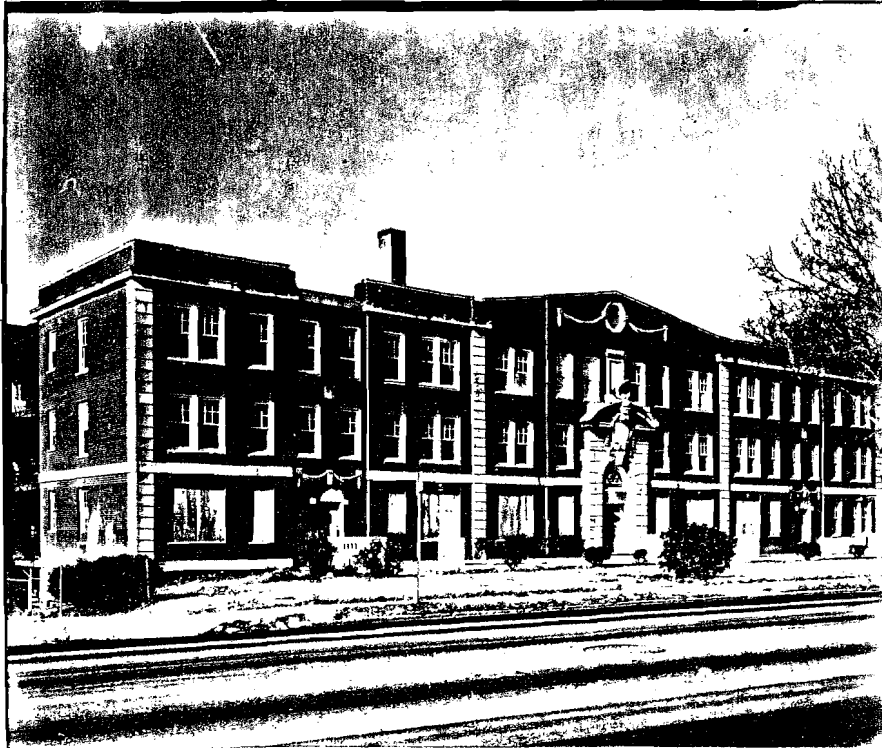
LOCATION: 2846-2840 Peachtree Road

OWNER: Ed Sherwood, President
 Ed Sherwood Chevrolet, Inc.
 2930 Peachtree Road N.W.
 Atlanta, Georgia 30305

DESCRIPTION:

A three story, brick English Renaissance style apartment building. It has a central bay with an elaborate center doorway and flanking wings highlighted by corner quoins.

Letter S on the Map



Photographer Facing Northwest

SIGNIFICANCE:

The Canton Apartments are significant architecturally as a good example of apartment dwellings built in the 1920s in the English Renaissance style rather than as a garden apartment facing a courtyard. It appears more like a mansion would in the West Paces Ferry Road area than as an apartment.

In 1928 it was listed as "The Canton" and housed thirty seven apartments

In local history it is significant as part of the commercial development that began on the eastern edge of the West Paces Ferry Multiple Resource Area in the late 1910s and early 1920s simultaneous with the continued residential development of the land west of here. It and other apartments nearby served as a buffer between the large homes and mansions and Peachtree Road and its rapid commercialization.

DATE: by 1928

UTM REFERENCE: Zone 16/E742040/N3746480

ACREAGE: one acre

VERBAL BOUNDARY DESCRIPTION:

Tax Map No. 17/0100/0005/018

E RECORDED: Feb. 19, 1980
 RECORDED BY: Kenneth H. Thomas, Jr.